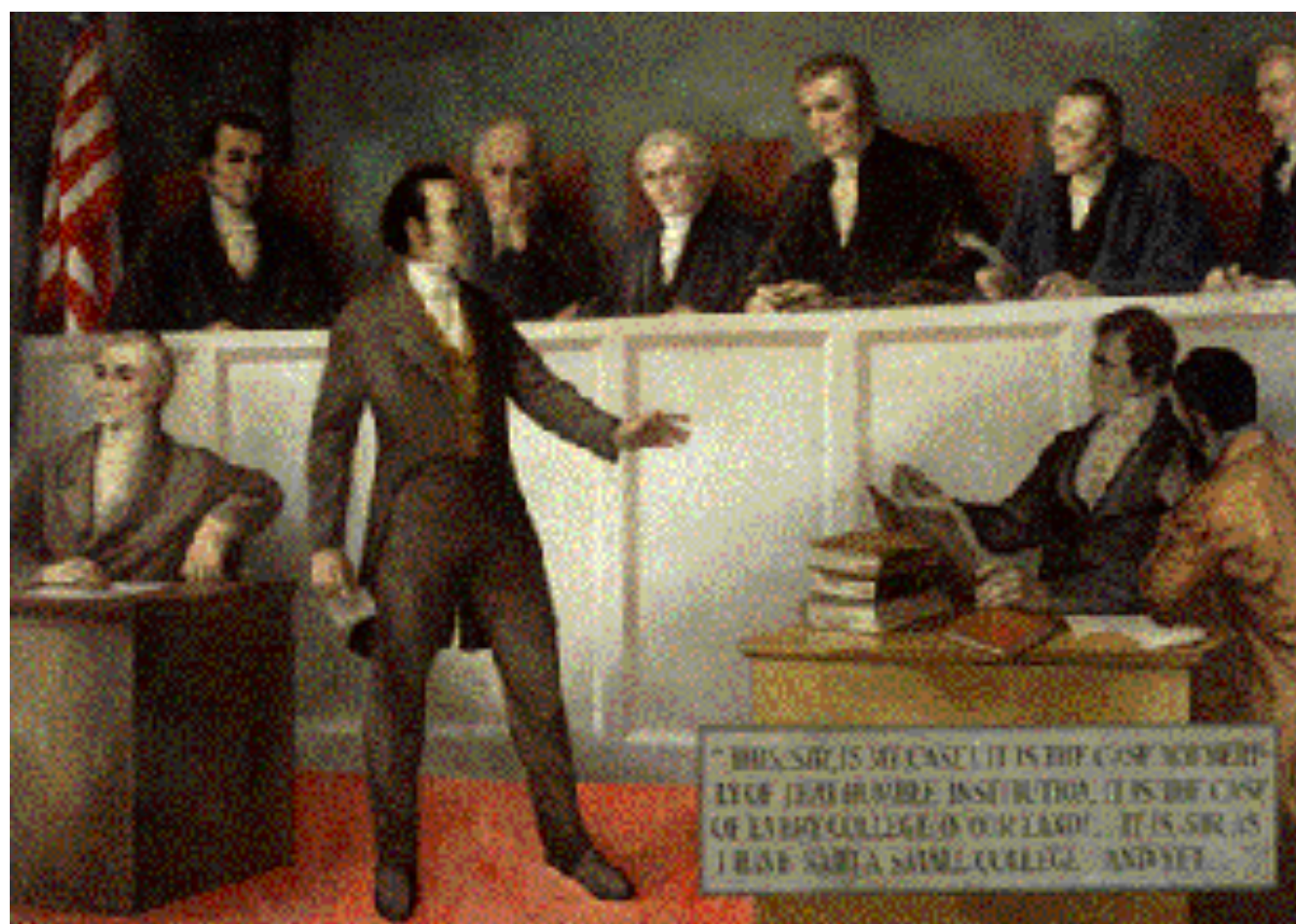


FOURTH ANNUAL GATHERING OF SISTERS OF CHARITY MINISTRY
LEADERS, MINISTRY NETWORK, BOARD MEMBERS AND EXECUTIVES OF
THE ELEVEN DIFFERENT MINISTRIES SPONSORED BY THE
CONGREGATION

IT'S OUR MISSION

*19 September 2015
St. Vincent's Hospital Westchester
Harrison, NY*





Catholic Education



CATHOLIC SCHOOLS



DIVIDENDS FOR LIFE

Catholic Universities

- Transmission of the Catholic tradition
- Encounter with Catholic faith
- Contribute to the Catholic intellectual life.
- Social goals

Catholic Health Care



Catholic Social Services

Providing Disaster Relief / Sheltering Those in Need/
Feeding the Hungry/ Supporting Healthy Lives/
Providing Education & Training / Building Financial
Security / Welcoming the Stranger / Assisting with
Adoption / Caring for the Vulnerable





What do Ben & Jerry's, the Marines and
the cast of Les Misérables All Have in
Common?

Institutions

1. Hiring/Training

- Hiring for Mission
- Training Programs for employees at hiring
- Longer programs for faculty
- Trustee training
- Ongoing education programs (lunch seminars, day retreats, trips to foundation places)



Institutions

2. Artwork



Institutions

3. Awards



Institutions

4. Institutes

5. Lecture Series



- ❖ Center for Social Concerns
- ❖ Eck Institute for Global Health
- ❖ Institute for Church Life
- ❖ Institute for Educational Initiatives
- ❖ Kroc Institute for International Peace Studies
- ❖ Tantur Ecumenical Institute
- ❖ Center for Civil and Human Rights
- ❖ William J. Shaw Center for Children and Families
- ❖ Center for the Study of Religion and Society
- ❖ Institute for Ethical Business Worldwide
- ❖ Ruth M. Hillebrand Center for Compassionate Care in Medicine

Institutions, cont...

6. Mission Officers



Institutions, cont...

7. Catholic Studies Degrees/departments



Institutions, cont...

8. Accountability Structures

- Strategic Goals
- Job descriptions and annual evaluations
- Measuring progress
- Board “Mission Committees”



Institutions

9. Taking responsibility for the Religious Charism

- Establishing journals
- Sending/paying for PhD's
- Paying for research, travel of scholars
- Creating conferences
- Putting historical resources on line
- Collecting the history so it isn't lost (including oral histories)
- Archivists with specializations



University Partnerships

10. To teach the sponsoring congregation's history and spirituality, (e.g., Jesuits, Franciscans, LaSallians, Mercy's, Vincentians)



University Partnerships

11. To help various functions think through their roles of leading Catholic mission (e.g. AJCU)

AJCU Conferences:

Advancement Administrators (JAA)

Arts and Sciences Deans

Business Deans

Campus Ministry Directors

Chief Academic Officers

Communication Deans

Deans of Adult and Continuing Education (DACE)

Education Deans Conference

Enrollment Managers

Diversity and Equity (CDE)

Facilities,

Public Safety and Sustainability

Finance Officers

Financial Aid Directors

Graduate Deans

Honors Programs

Information Technology Management (CITM)

Institutional Planning, Research and Assessment

International Education

Justice in Jesuit Higher Education

Jesuit Universities Humanitarian Action Network (JUHAN)

Library Deans

Nursing Programs

Pastoral, Theological and Ministerial Education

Philosophers in Jesuit Education (PJE)

Mission and Identity Conference

Registrars in Jesuit Institutions (CRe)

Research Administrators

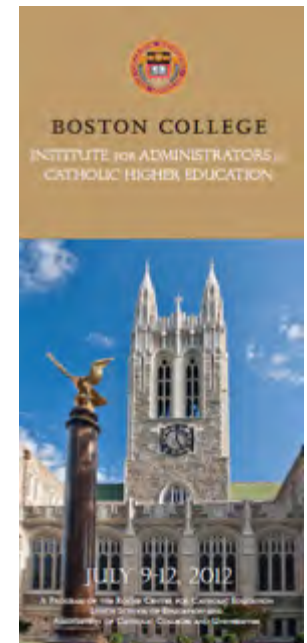
Rhetoric and Composition (JCRC)

Service-Learning Directors

Student Affairs Administrators (JASPA)

Nationally...

- 12. Boston College Institute for Administrators
- 13. ASACCU for student affairs professionals
- 14. Catholic Campus Ministry Association
- 15. U San Diego for young administrators
- 16. Notre Dame/ U San Francisco for Trustees

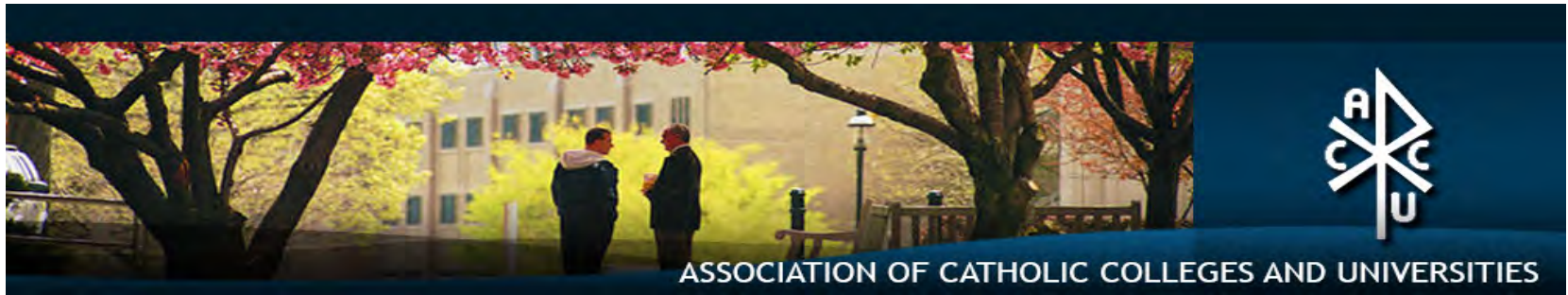


Nationally...

18. Occasional conferences

19. Wraparound meetings at other conferences
(e.g., CIC, AGB, NASPA)





- 20. Lobbying with the Federal Government
- 21. Coordinates issues with the Bishops Conference
- 22. Public relations for Catholic higher education in the United States (“The Voice of CHE”)
- 23. Annual conference for Presidents
- 24. Publications
- 25. Additional conferences for social justice and periodic topics.
- 26. Training programs for new presidents, provosts, and mission officers.



UNITED STATES CONFERENCE OF
CATHOLIC BISHOPS

- 27. ECE implementation guidelines and two subsequent evaluations
- 28. Standing committee of bishops and presidents
- 29. A desk for higher education
- 30. Campus ministry training, certification, national conference
- 31. A process for how theologians will be investigated
- 32. A general principle that the primary relationship is between the college and the local ordinary.

Sponsoring Congregations

33.Sources of funding

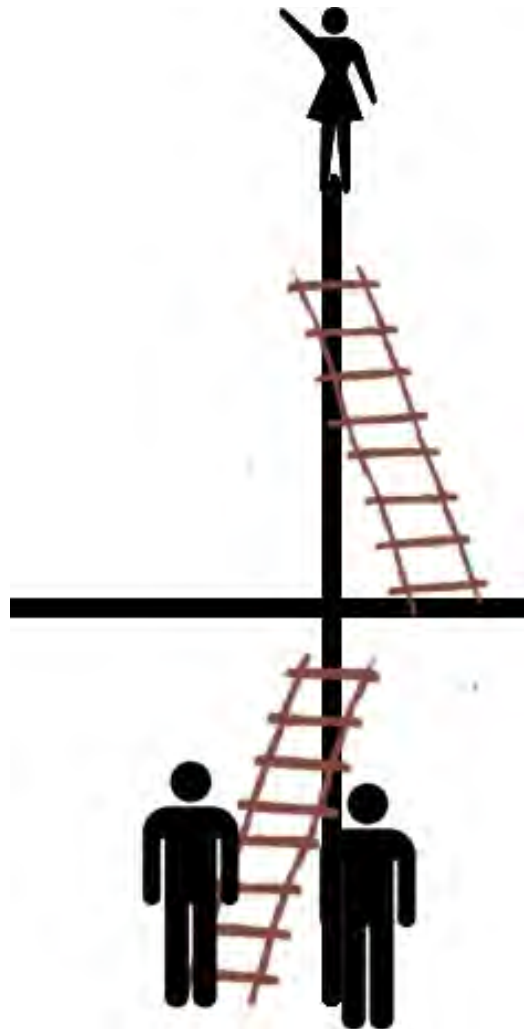
34.Partners in providing
formation experien

35.New models of
sponsorship

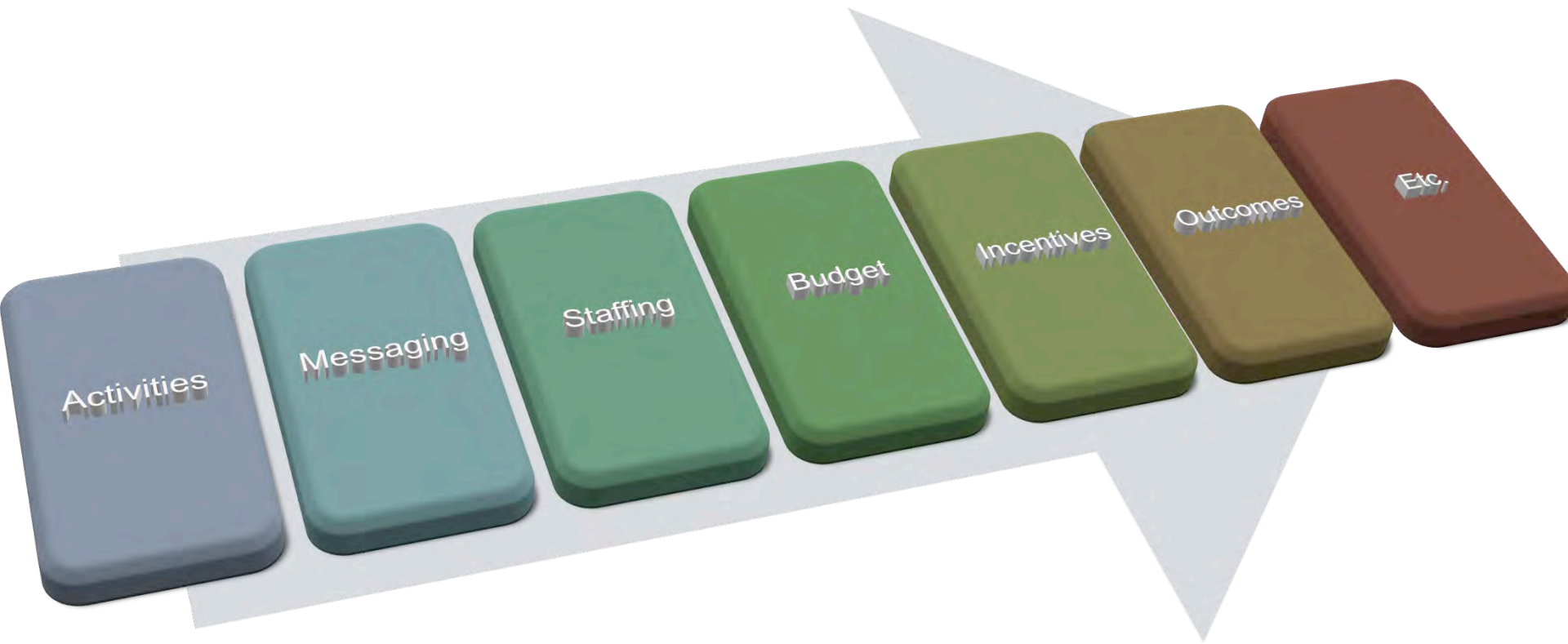
36.New models of
accountability



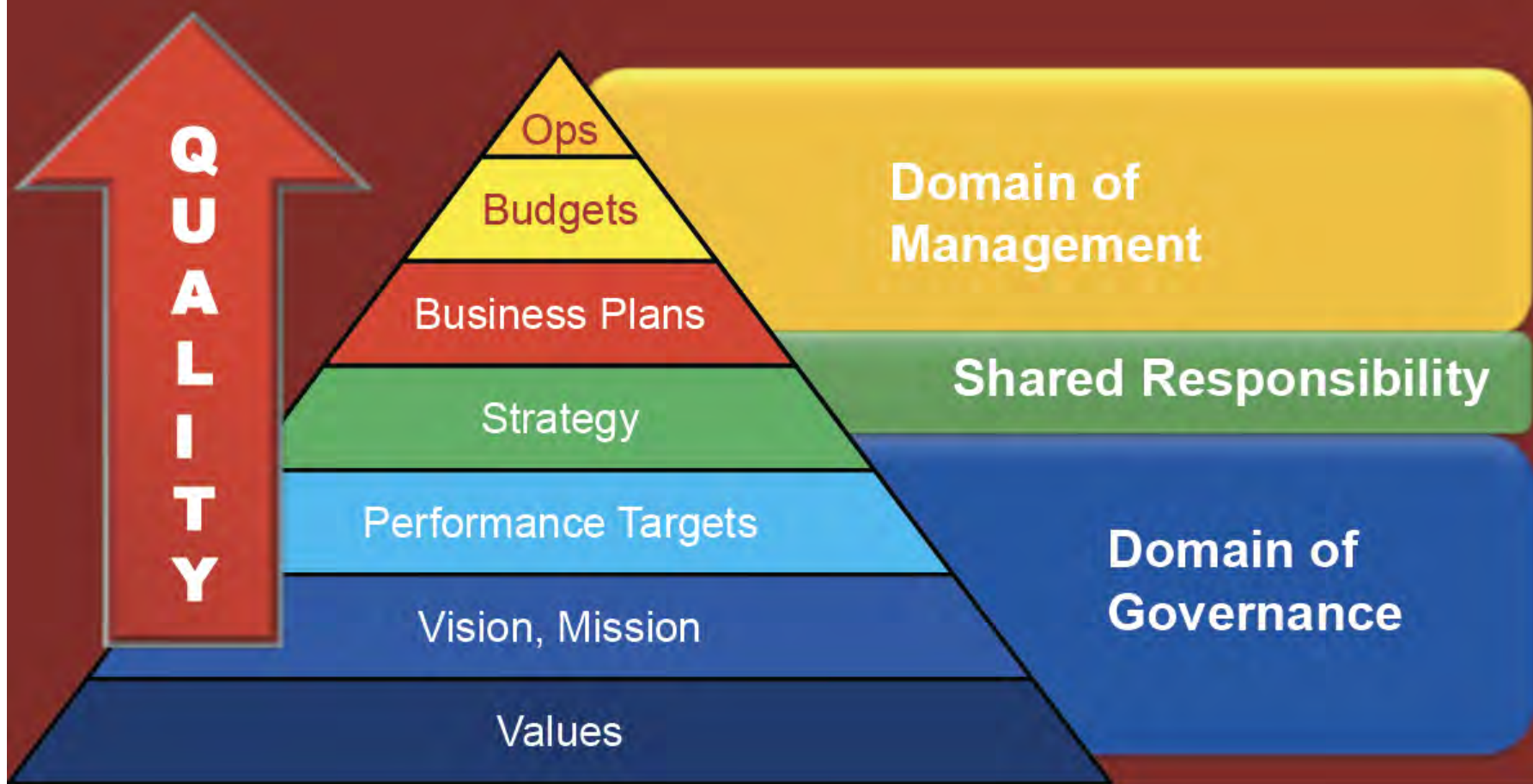
The Ladder of Engagement



Mission Alignment



Positioning of Quality



Discussion

The central challenge of our time is the shift from being part of the “Sisters’ mission” to taking responsibility for “Our Mission” and creating new structures so that one generation always forms the next.

- How do people come to take responsibility for an organization’s heart and culture?
- What ideas strike you about how to do this best?

Mahler's 2nd Symphony

Tempo sostenuto.

schwer

1. 2. Horn in F. *ppp*

3. 4. Horn in F. *schwer* *ppp*

5. 6. *schwer* *ppp*

2. 3. Pos. mit Dämpfer. *mf*

Tam - tam (tief) *pp*

1. u. 2. Harfe unisono *schwer* *p*

Cello u. Bass unisono *schwer*

24 *ppp* mit Dämpfer

Tempo sostenuto.

Mahler's 2nd Symphony

1. Ob.

1. Viol.

2. Viol.

Viola.

Altst.

Celli
geth.

2

rit. molto espress.

pp

ppp

ppp

ppp

rit.

(pp)

lie - ber möcht' ich in Him - mel sein, je lie - ber möcht' ich im Himmel sein!

ppp

ppp

2

rit.

Detailed description: This is a page from the musical score of Mahler's 2nd Symphony. It features a vocal line (Altst.) and several instrumental parts (1. Ob., 1. Viol., 2. Viol., Viola., Celli geth.). The vocal line is highlighted in yellow and contains the lyrics: "lie - ber möcht' ich in Him - mel sein, je lie - ber möcht' ich im Himmel sein!". The instrumental parts are marked with dynamics such as ppp, pp, and p. The score includes various musical notations, including notes, rests, and articulation marks. The tempo and expression markings "rit. molto espress." and "rit." are present. The key signature is B-flat major, and the time signature is 4/4.

Mahler's 2nd Symphony

31 Langsam. Misterioso.
Sopr. Solo (ohne im Geringsten hervorzutreten.) *rit. a tempo*

Gemischter Chor a Capella.

Sopran-Solo. *ppp* Auf - er - stehn, ja auf - er - stehn wirst du, mein Staub, nach kur - zer Ruh!

Soprane. *ppp* Auf - er - stehn, ja auf - er - stehn wirst du, mein Staub, nach kur - zer Ruh!

Alte. *ppp* Auf - er - stehn, ja auf - er - stehn wirst du, mein Staub, nach kur - zer Ruh!

Tenore. *ppp* Auf - er - stehn, ja auf - er - stehn wirst du, mein Staub, nach kur - zer Ruh!

Bässe **31** *ppp* Auf - er - stehn, ja auf - er - stehn wirst du, mein Staub, nach kur - zer Ruh!

★) Anmerkung für das Studium: Die 2. Bässe nicht eine Octave höher, sonst würde die vom Autor intendirte Wirkung ausbleiben; es kommt durchaus nicht darauf an, diese tiefen Töne zu hören, sondern durch diese Schreibart sollen nur die tiefen Bässe verhindert werden, etwa das obere B zu „nehmen“, und so die obere Note zu verstärken.

FOURTH ANNUAL GATHERING OF SISTERS OF CHARITY MINISTRY
LEADERS, MINISTRY NETWORK, BOARD MEMBERS AND EXECUTIVES OF
THE ELEVEN DIFFERENT MINISTRIES SPONSORED BY THE
CONGREGATION

IT'S OUR MISSION

*19 September 2015
St. Vincent's Hospital Westchester
Harrison, NY*